

Studio — Saxe

Press Release
Suitree Experience Hotel
2023



JUNGLE PODS EMERGE FROM COSTA RICA'S LANDSCAPE AND FLOAT OVER THE MOUNTAINS

Overview

Our clients brought to Studio Saxe a unique vision: to create a distinct canopy-based guest experience. This design was not only intended to provide expansive views of the horizon and mountains but also to offer an immersive opportunity for guests to appreciate the flourishing life found within the canopy layers of Costa Rica's vibrant jungles.

"As children, our treehouse was a place of mystery and magic, where we kept our deepest secrets and cherished the most memorable moments. It was our sanctuary, a place to escape the stress and worries of the world and reconnect with our true selves. Suitree Experience Hotel has a modern take on this timeless idea, providing a serene and peaceful space to disconnect and rediscover your inner peace." – The Client

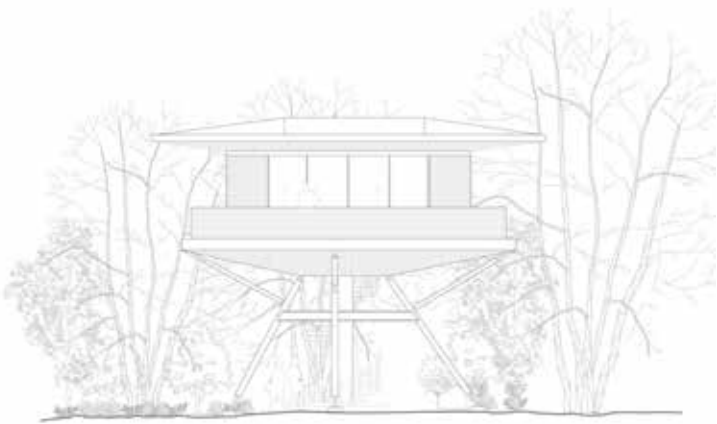
Project: Suitree Experience Hotel

Location: Sardinal, Guanacaste, Costa Rica

Date of completion: January 2023

Client: Suitree Experience Hotel

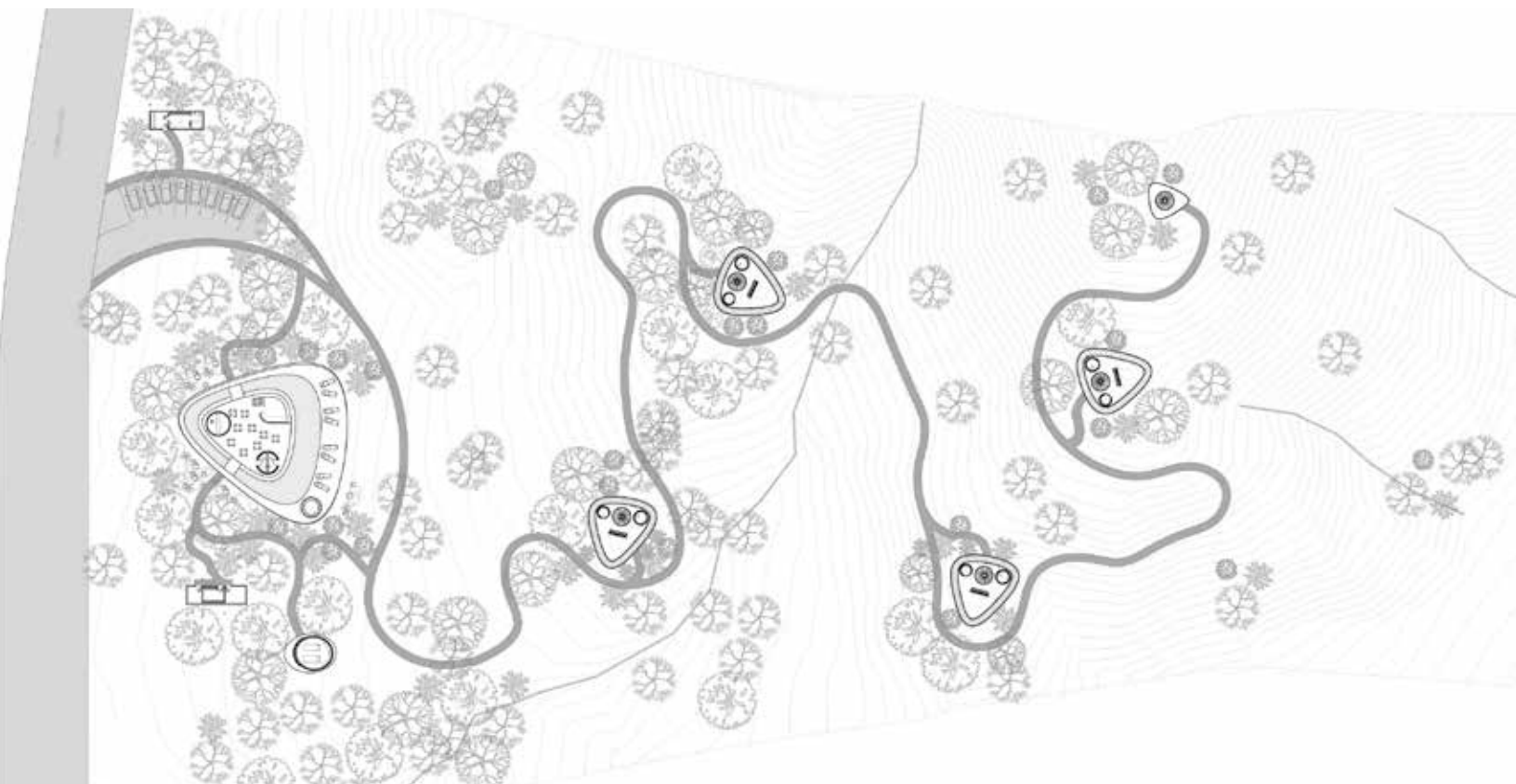
Area: Approx. 921 m²



Concept

Inspired by the traditional concept of treehouses, we dove deep into understanding the unique topographical and geological conditions of the site for our design of the Suitree Experience Hotel. We've created tree-inspired pods, floating over the landscape, using a strong metal framework covered with natural wood. This design integrates stability with harmony, crafting a sustainable experience that respects and enhances its surrounding environment.

Suitree Experience Hotel





Design

In our quest to merge human living spaces with the natural world, we envision architecture not as an imposition on the landscape, but rather as a seamless extension of it. Our design philosophy revolves around the principle of 'floating architecture,' where structures do not disturb the existing ecosystem but instead coexist and symbiotically interact with it.

A central staircase ties the floating pods to the earth, merging internal and external terraces with the verdant surroundings. The gently undulating edges of the pods echo the organic forms of the forest, reflecting a natural symbiosis.



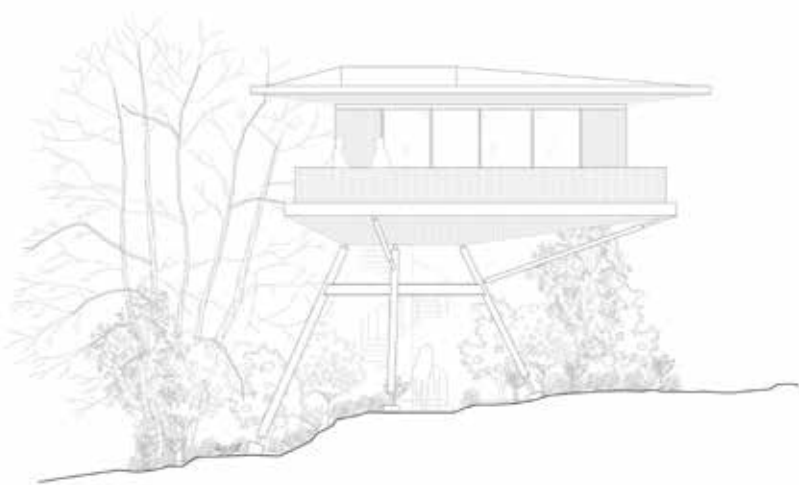


Sustainability

The concept of floating pods was birthed from our commitment to tread lightly on the earth. These structures hover gracefully above the landscape, allowing nature to flow uninterrupted beneath them and around them. Rainwater and local biodiversity move freely, ensuring the built structure coexists with the ecosystem. During construction, every tree was preserved, and each pod is designed to independently harvest water, contributing to a larger sustainable water management system.

These structures not only offer an immersive experience for inhabitants but also actively contribute to sustainability, symbolizing our respect for and commitment to the preservation of the natural environment.

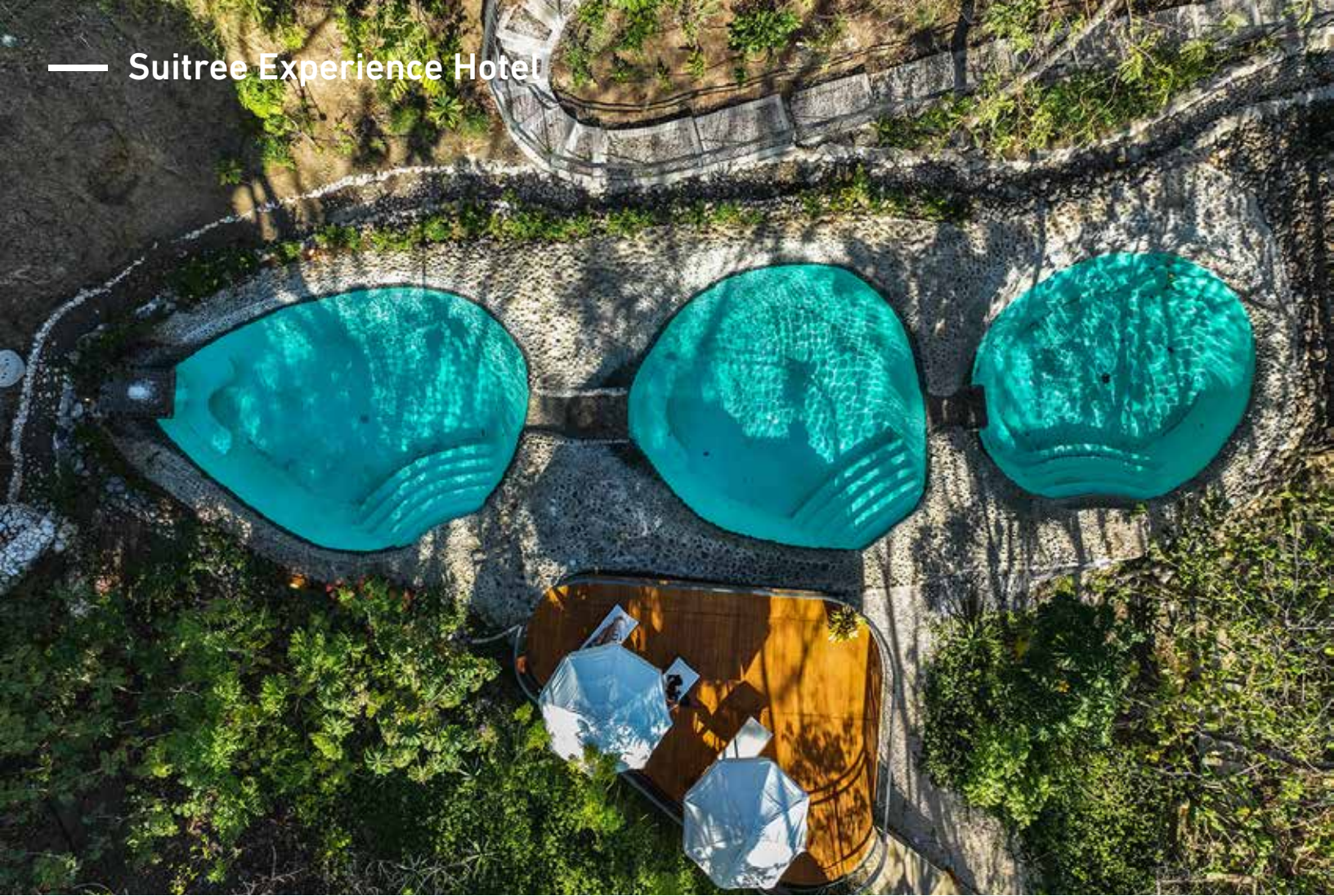




Construction

We employed innovative construction techniques, incorporating off-site prefabrication to minimize the impact on the property and the existing trees. This not only ensured quick and efficient assembly but also demonstrated a unique respect for the natural surroundings. Four robust supports lend each pod structural and seismic stability while creating the illusion of an organism gently treading on the landscape. This 'living, moving' structure further embodies the harmony between architecture and nature.

— Suitree Experience Hotel





Architecture: Studio Saxe

Interior: Nosara Design Pauline Steenkamer

Landscape Design: Vida Design Studio

Collaborators: 93 Ingenieros, Servi CO.CO.

Photography: Danta Collective

— About us

Benjamin G. Saxe set up his own practice in San Jose, Costa Rica in 2004, with the aim of exploring our relationship with the natural environment through architecture. Since then, Studio Saxe has grown into an award-winning international practice made up of a multidisciplinary team, creating buildings and spaces by blending technological innovation with handcrafted techniques to form truly sustainable designs. Founded on the belief that buildings must connect to their landscape – whether a tropical paradise or a concrete jungle – Studio Saxe brings a global attitude to solve local problems. Ideas and techniques from around the world can be harnessed to benefit communities, both at home and abroad. Local traditions and identities are explored and developed, ensuring a process whereby we learn from the past and build for the future.

The dedicated architects and designers at Studio Saxe uncover new design solutions for every project, treating each building as an opportunity to improve methods and approaches, responding to specific places. Working alongside clients and collaborators, the studio continually seeks new forms and functions that blur the boundaries between natural habitats and inhabited space.

Latin America

Costa Rica

San Jose

PO Box 206-1225

T: +506 4030 6053

Europe

United Kingdom

London

T: +44 (0) 203 807 6408

North America

United States

Los Angeles

+1 (323) 283 8233

General Enquiries

info@studiosaxe.com

www.studiosaxe.com