

# Studio — Saxe

Press Release

**Naia**

July 2021

# Naia



StudioSaxe\_Naia\_Two\_18

## TROPICAL OASIS WITH TEAK ROOF & SCREENS BLENDS INSIDE-OUT BOUNDARIES CONNECTING PEOPLE TO NATURE

### Overview

Studio Saxe was commissioned to design two beach houses in the beautiful town of Santa Teresa in Costa Rica. We decided to blend the tropical jungle into the houses whilst creating a bioclimatic comfort for people to enjoy the outdoor experience.

**Location:** Santa Teresa, Puntarenas, Costa Rica

**Date of completion:** November 2020

**Client:** Paola Carvahlo

**Area:** (Naia One) Approx. 251 m<sup>2</sup>, (Naia Two) Approx. 344 m<sup>2</sup>

**Studio Saxe Design Director:** Benjamin G. Saxe

# Naia One



StudioSaxe\_Naia\_One\_155

## Naia One

A one-story house blocks the street and opens up to an interior garden with a pool creating leisure spaces within that play with light.



StudioSaxe\_Naia\_One\_070

# — Naia One



StudioSaxe\_Naia\_One\_042



StudioSaxe\_Naia\_One\_158



StudioSaxe\_Naia\_One\_134

# — Naia Two



StudioSaxe\_Naia\_Two\_005



StudioSaxe\_Naia\_Two\_127

## Naia Two

A vertical roof-like umbrella creates an atrium to enjoy the natural light and the outdoors while being protected from the elements. Volumes of rooms are then intersected to create a separation between private spaces and common spaces in this two-story house.

# Naia Two



StudioSaxe\_Naia\_Two\_175

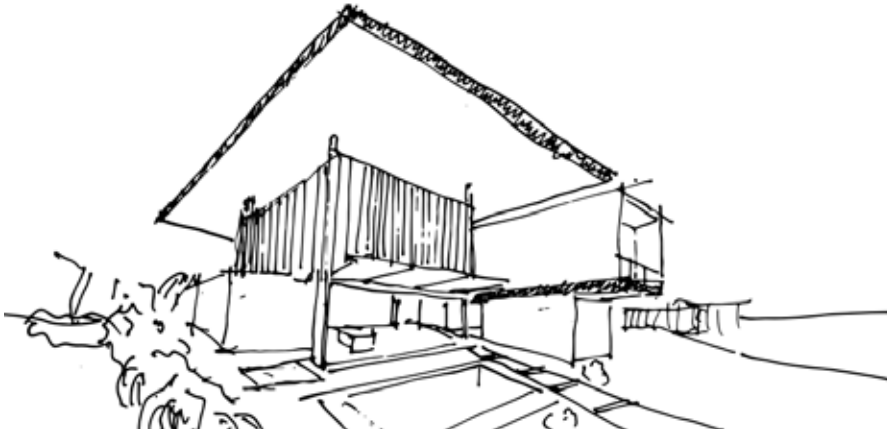


StudioSaxe\_Naia\_Two\_096



StudioSaxe\_Naia\_Two\_135

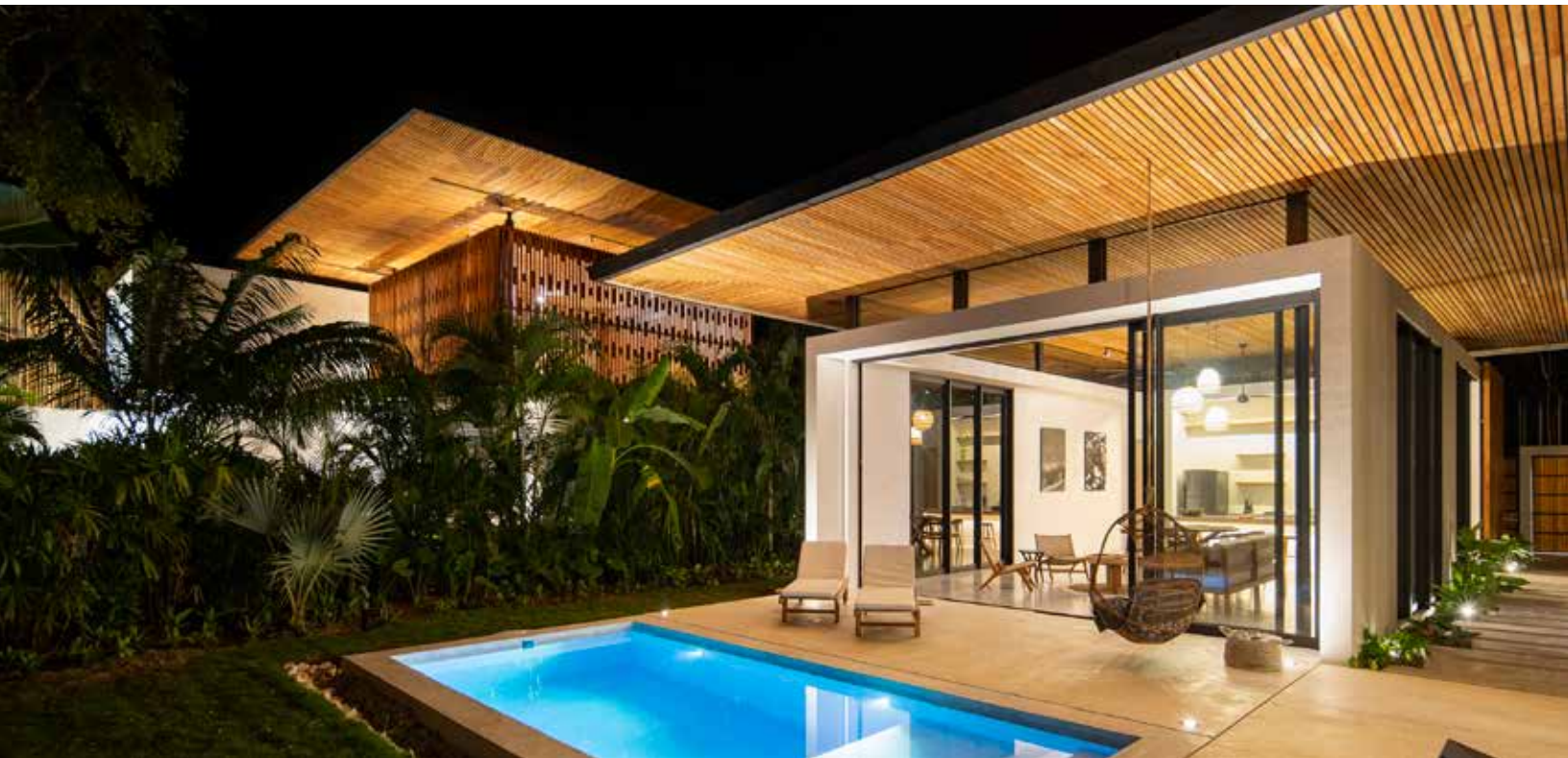
# Naia —



StudioSaxe\_Naia2\_Diagram

## Concept

Two homes are set within walking distance to the beach and are composed of generous rooflines that create shelter and the possibility of living outside within nature.



StudioSaxe\_Naia\_One\_241

## Design

By creating an identifiable roofline, we could then use it to create a language of architecture for both large and small scale. Teak screens and patterns are used throughout in order to create dappled sunlight and also to protect from rain and the elements. The design is composed of lightweight structural living areas and solid private bedrooms.



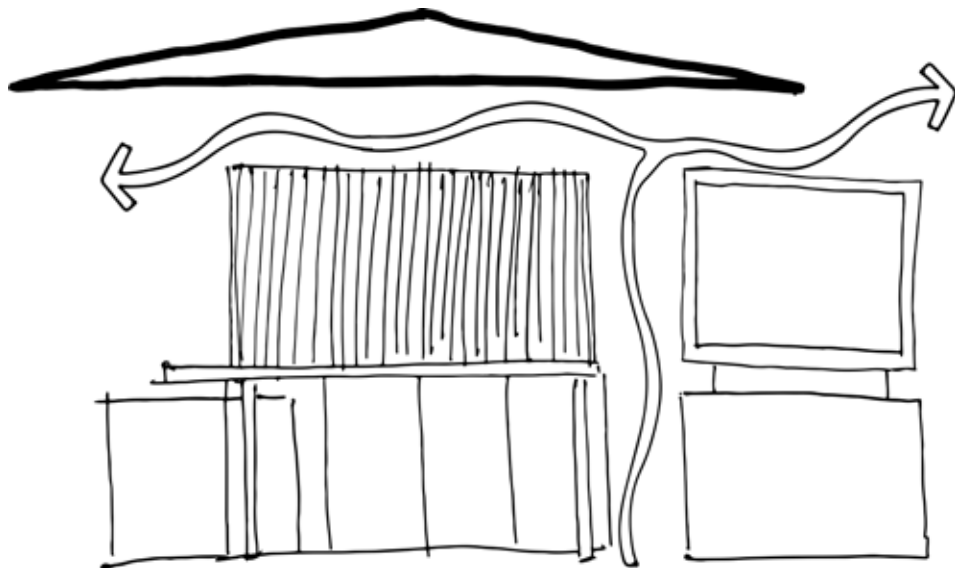
StudioSaxe\_Naia1\_Diagram



StudioSaxe\_Naia\_One\_168

## Sustainability

Throughout the day common spaces are generously ventilated as well as illuminated by natural light that seeps through thus reducing the use of energy throughout. At night the more intimate and solid bedroom structures create the perfect enclosure whilst allowing for cross ventilation for comfort. The large rooflines are used to collect water that later is used for garden irrigation throughout. Hot water is created by solar panels for a more efficient energy strategy.



StudioSaxe\_Naia2\_Diagram\_S

# Naia



StudioSaxe\_Naia2\_191

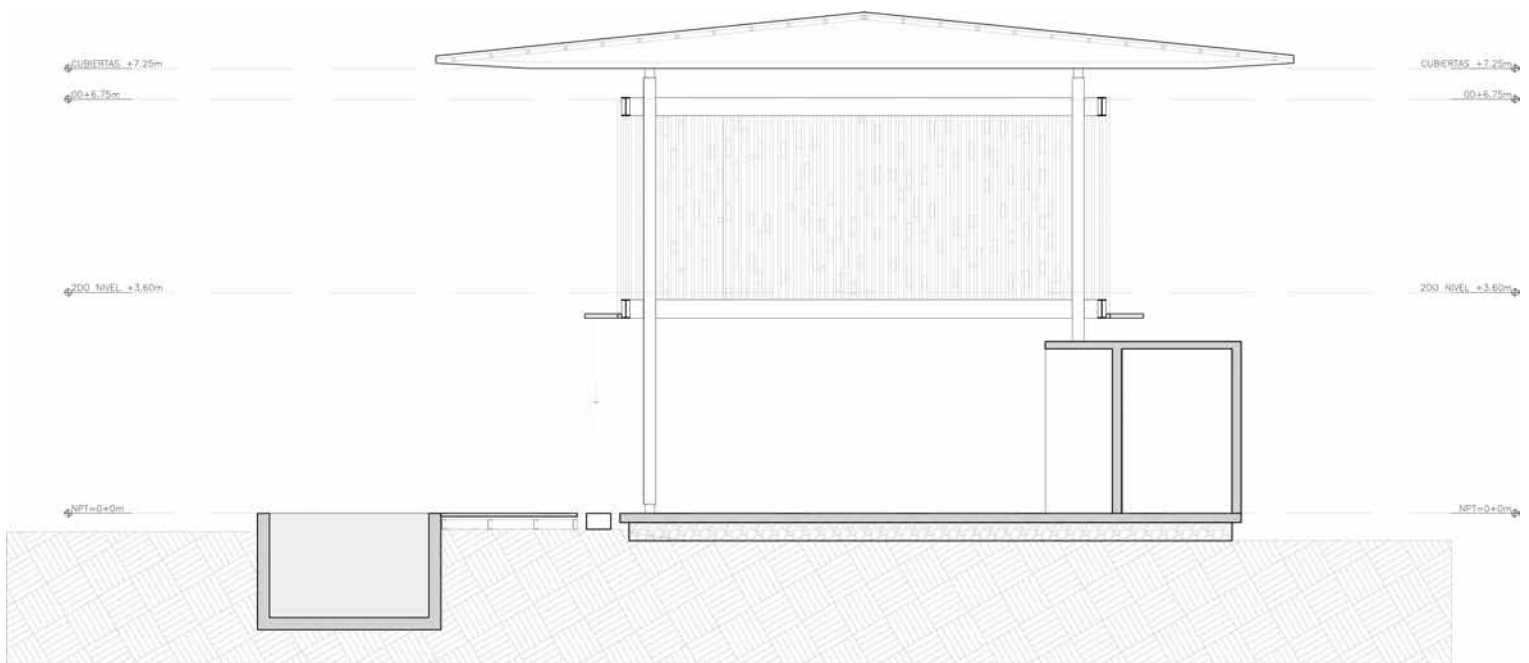


StudioSaxe\_Naia1\_054

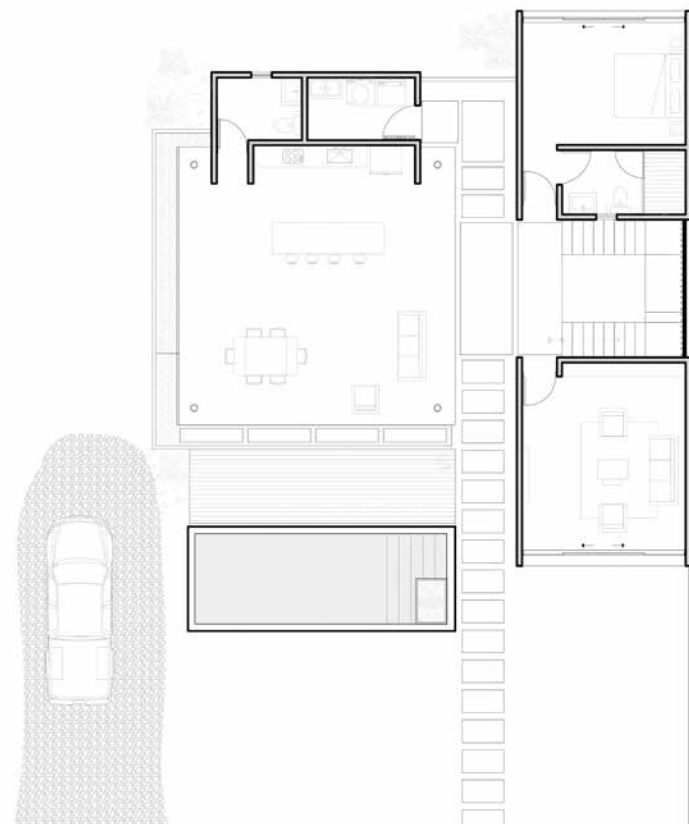
## Construction

The main living spaces are composed of light-weight steel frames that hold open spaces that welcome nature inside with long rooflines that are made of steel and covered in teak. Screens made out of reforested teak wood clad the steel structure and create refracted light around the spaces. Bedrooms, on the other hand, are made of concrete making them a much more enclosed construction that is independent of the main steel structure acting as a type of system that can be assembled for making a bigger or smaller house.

# Naia



StudioSaxe\_Naia\_Two\_2D\_B



StudioSaxe\_Naia\_Two\_2D\_A

**Builder:** Proconsa

**Structural Engineer:** S3

**Electromechanical Engineer:** S3

**Interior Design:** Cristina de Freitas

**Photography:** Andres Garcia Lachner

**Landscape:** Jen Speirs Plant Styling+Design

# — About us

Benjamin G. Saxe set up his own practice in San Jose, Costa Rica in 2004, with the aim of exploring our relationship with the natural environment through architecture. Since then, Studio Saxe has grown into an award-winning international practice made up of a multidisciplinary team, creating buildings and spaces by blending technological innovation with handcrafted techniques to form truly sustainable designs. Founded on the belief that buildings must connect to their landscape – whether a tropical paradise or a concrete jungle – Studio Saxe brings a global attitude to solve local problems. Ideas and techniques from around the world can be harnessed to benefit communities, both at home and abroad. Local traditions and identities are explored and developed, ensuring a process whereby we learn from the past and build for the future.

The dedicated architects and designers at Studio Saxe uncover new design solutions for every project, treating each building as an opportunity to improve methods and approaches, responding to specific places. Working alongside clients and collaborators, the studio continually seeks new forms and functions that blur the boundaries between natural habitats and inhabited space.

**Latin America**

Costa Rica

San Jose

PO Box 206-1225

T: +506 4030 6053

**Europe**

United Kingdom

London

T: +44 (0) 203 807 6408

**North America**

United States

Los Angeles

+1 (323) 283 8233

**General Enquiries**

[info@studiosaxe.com](mailto:info@studiosaxe.com)

[www.studiosaxe.com](http://www.studiosaxe.com)