

# Studio — Saxe

Press Release  
**Villa Akoya**

September 2018

# — Casa Akoya



VillaAkoya\_Outside\_1

## LARGE TERRACES CAPTURE THE WIND AND WAVES ON THE PACIFIC COAST OF COSTA RICA.

Large terraces capture the wind and waves on the Pacific coast of Costa Rica. **Set amongst idyllic white sand beaches and coconut groves**, this low-key beach home was conceived to give its inhabitants not only a visual but also a literal connection to the sand and water where it belongs.

**Location:** Puntarenas, Costa Rica

**Date of completion:** 2018

**Client:** Private Residence

**Area:** Aprox. 302m<sup>2</sup>

**Director:** Benjamin G. Saxe

**Structural Engineer:** Sotela Alfaro Ltda.

**Electromechanical Engineer:** Dynamo Studio

**Builder:** Gad Harel

**Photography:** Andrés García Lachner



# — Casa Akoya



VillaAkoya\_Outside\_2

Horizontal roof planes create large indoor-outdoor spaces that integrate seamlessly and diffuse the perception of the home with its surrounding natural environment. **Lightness and materiality** are used to create a feeling of openness and airiness that permeates through the inhabitants.



VillaAkoya\_Outside\_3



# — Casa Akoya



VillaAkoya\_Outside\_4



VillaAkoya\_Outside\_5

The house was raised off from the ground by 3 steps allowing the inhabitants to have a more direct view of the waves and the beach break. This subtle move also helped to create a feeling of levitation above the landscape and protection. The house was then split up in 4 horizontal roof planes which, 3 for each bedroom and 1 for the main living area. **This architectural strategy allows for every space to feel as the roof belongs to that specific location whilst dematerializing the edges of the home and creating the opportunity of cross ventilation between spaces.** Controlled natural light then is allowed to permeate from 3 sides of every space making them feel more integrated to the surrounding landscape.



# — Casa Akoya



VillaAkoya\_Outside\_6



VillaAkoya\_Outside\_7

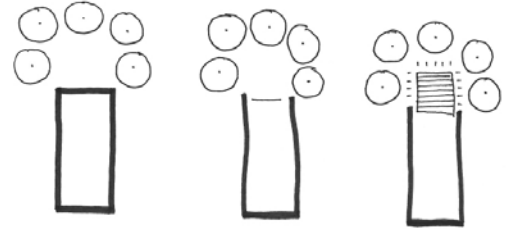
Traditional cinder block construction was used for the main structural walls of the house for its easy maintenance and durability. Light weight wooden roofs float above these walls and create large overhang extensions that protect the building from the elements whilst creating outdoor decks.



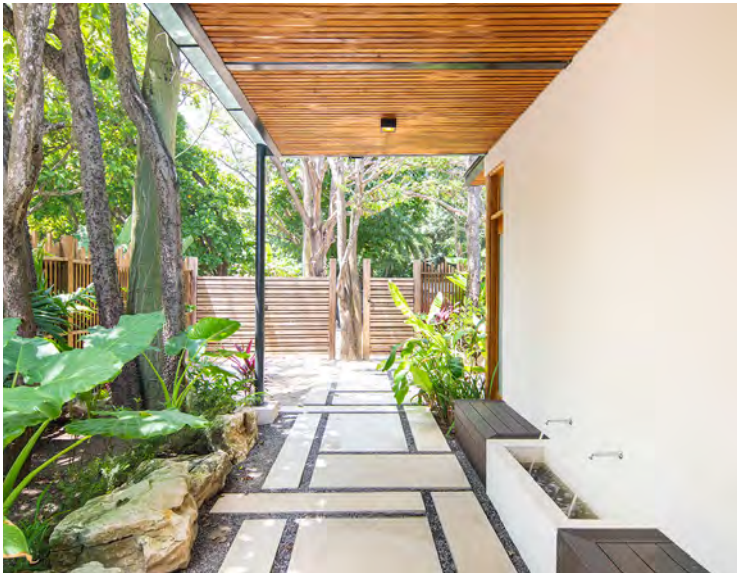
# — Casa Akoya



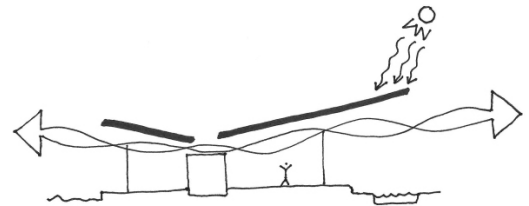
VillaAkoya\_Inside\_1



VillaAkoya\_Diagram\_1



VillaAkoya\_Outside\_8



VillaAkoya\_Diagram\_2



VillaAkoya\_Outside\_9

At Studio Saxe we believe that clever design should precede technology when designing a project. We use common sense bioclimatic strategies for temperature control to create spaces that require less energy consumption and provide an overall feeling of wellness. The “elevated” roofline above the walls of the house create the perfect opportunity for cross ventilation and controlled natural light. Long overhangs cool down the spaces during the day and protect from sun and rain. Active strategies are then introduced such as solar hot water, water collection, energy efficient systems, and others to supplement the passive cooling design of the project.

# — About us

Benjamin Garcia Saxe set up his own practice in San Jose, Costa Rica in 2004, with the aim of exploring our relationship with the natural environment through architecture. Since then, Studio Saxe has grown into an **award-winning international practice** made up of a multidisciplinary team, creating buildings and spaces by blending technological innovation with handcrafted techniques to form truly sustainable designs. **Founded on the belief that buildings must connect to their landscape** – whether a tropical paradise or a concrete jungle – Studio Saxe brings a global attitude to solve local problems. Ideas and techniques from around the world can be harnessed to benefit communities, both at home and abroad. Local traditions and identities are explored and developed, ensuring a process whereby we learn from the past and build for the future.

The dedicated architects and designers at Studio Saxe uncover **new design solutions for every project**, treating each building as an opportunity to improve methods and approaches, responding to specific places. Working alongside clients and collaborators, the studio continually seeks new forms and functions that blur the boundaries between natural habitats and inhabited space.

Latin America  
Costa Rica  
PO Box 206-1225  
San Jose  
T: +506 4030 6053

Europe  
United Kingdom  
Oce 9910  
PO Box 6945  
London W1A 6US  
T: +44 (0) 20 8144 2721

General Enquiries  
[info@studiosaxe.com](mailto:info@studiosaxe.com)  
[www.studiosaxe.com](http://www.studiosaxe.com)