

Studio — Saxe

Press Release
Edificio Santa Rita

November 2018

— Edificio Santa Rita



SantaRita_Outside_1

“UP-CYCLING” INTERVENTIONS HAVE A MUCH LOWER CARBON FOOTPRINT BY NOT HAVING TO TEAR DOWN AND REBUILD EVERY TIME

The Maternity Clinic Santa Rita holds a special place in the hearts and minds of so many people who remember it as a place where their children were brought into the world. It was not only the down-to-earth homey architecture that made it a special place, but also the amazing caring staff filled with humanity and passion that made it an icon of the city of San Jose, Costa Rica.

As the cities of Latin America expand towards the periphery, town centers many times suffer from desolation and in the best cases from transformation. The unique central and strategic location for the Santa Rita Clinic in the heart of the city of San Jose and next to the Judicial Courts of the country made it ideal for a complex transformation from maternity clinic into office building.

Location: San José, Costa Rica

Date of completion: 2018

Client: Grupo Gasehi

Area: Aprox. 2500m²

Director: Benjamin G. Saxe

Structural Engineer: Sotela Alfaro Ltda.

Electromechanical Engineer: Ciem

Builder: Rodrigo Altmann Constructora

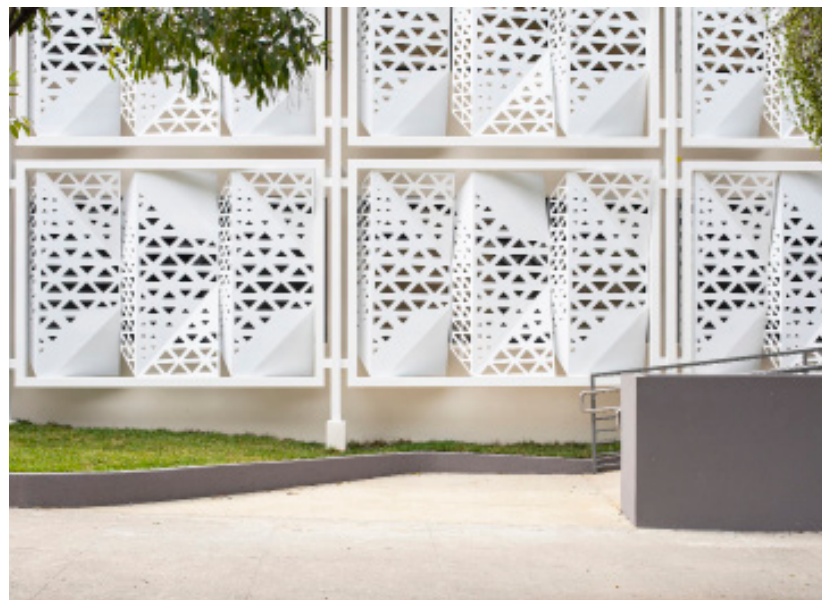
Photography: Andrés García Lachner

— Edificio Santa Rita



SantaRita_Outside_2

We believe that natural light, airflow, and quality of life are elements that span beyond specific uses and forms and that comprehend universal factors that transcend time. Our entire focus in the Santa Rita Clinic re-development was not only to update the structure, use, and technologies to comply with 21st century needs and standards, but also to improve the quality of spaces through natural ventilation, natural light, vegetation, and bioclimatic design.



SantaRita_Outside_3

— Edificio Santa Rita



SantaRita_Outside_4

Architect Benjamin Garcia Saxe of Studio Saxe explains:

“Reusing old structures and buildings on city centers proves to be a challenge for designers, however with creativity and common sense these “up-cycling” interventions have a much lower carbon footprint by not having to tear down and rebuild every time the use of buildings change in society.”

Strategically we have allowed for all future technological improvements to be made through common areas of the building which will aid in updating the building constantly and change use in the future. A parasol-security screen helps keep the heat out and aids in creating a comfortable interior environment without the extreme use of active climate control strategies of typical office buildings. Bioclimatic design was implemented to create spaces which are mostly lit by natural light and where there is constant natural airflow through internal gardens and light wells.



SantaRita_Outside_5

— Edificio Santa Rita



SantaRita_Outside_6



SantaRita_Outside_7_OriginalStructure

The structure of the old Santa Rita Clinic was updated through complex new foundation footings created whilst the building stood in place and reinforcements of key columns and walls throughout as well as integrating steel beam construction to open up spaces where needed. A completely new electromechanical system and communications installation runs throughout all public spaces and feeds every room with the highest level of technology of the day whilst allowing for any future improvement to be made without interrupting the use of the building.

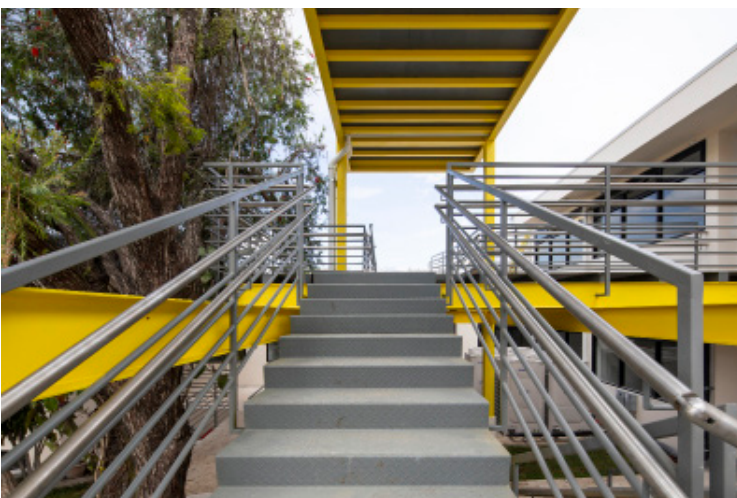
— Edificio Santa Rita



SantaRita_Inside_1



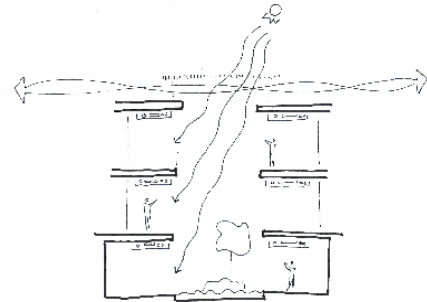
SantaRita_Outside_8



SantaRita_Outside_9



SantaRita_Diagram_1



Santa Rita_Diagram_2

Communal spaces and circulation create the backbone of the new office building where electrical and mechanical installations run through but also where color, air circulation, and light are brought to all spaces of the building. Strategically placed light walls help all spaces breathe and enhance the everyday experience of the new office spaces. Due to the intense security needs of a Judicial Office Building, a pergola-parasol multipurpose façade allows for dappled light to filter inside whilst providing security to the building and gives a sculptural artistic installation façade to the street.

— Edificio Santa Rita



— About us

Benjamin Garcia Saxe set up his own practice in San Jose, Costa Rica in 2004, with the aim of exploring our relationship with the natural environment through architecture. Since then, Studio Saxe has grown into an **award-winning international practice** made up of a multidisciplinary team, creating buildings and spaces by blending technological innovation with handcrafted techniques to form truly sustainable designs. **Founded on the belief that buildings must connect to their landscape** – whether a tropical paradise or a concrete jungle – Studio Saxe brings a global attitude to solve local problems. Ideas and techniques from around the world can be harnessed to benefit communities, both at home and abroad. Local traditions and identities are explored and developed, ensuring a process whereby we learn from the past and build for the future.

The dedicated architects and designers at Studio Saxe uncover **new design solutions for every project**, treating each building as an opportunity to improve methods and approaches, responding to specific places. Working alongside clients and collaborators, the studio continually seeks new forms and functions that blur the boundaries between natural habitats and inhabited space.

Latin America

Costa Rica
PO Box 206-1225
San Jose
T: +506 4030 6053

Europe

United Kingdom
Oce 9910
PO Box 6945
London W1A 6US
T: +44 203 807 6408

USA

Los Angeles
T: +1 323 283 8233

General Enquiries

info@studiosaxe.com
www.studiosaxe.com